
The Carrollton Times

Spring
2003



Volume 2
Number 1

CARROLLTON MANOR LAND TRUST, INC.
P.O. Box 25, Adamstown, MD 21710

A Message from our President

As I prepare this message, concerns for the conflicts in our world are ever present. Life goes on for most of us, as it did prior to March 19, yet the world is different. The media informs us of events in the Middle East and life has changed for many people on many different levels. My thoughts go out to our servicemen and women, their family and friends, and to the people who are in harms way and defenseless in other parts of the world. I am joined by the board of the Carrollton Manor Land Trust, when I write that we hope and pray for the leaders of the world to bring about an enduring peace in the region.

Thank you,
Nancy Bodmer

Inside...

- How to Join.....2**
- CMLT Breaking Ground.....2**
- Rural Legacy.....3**
- New Members.....3**
- Partnership.....4**

Glen Cairn Farm placed in permanent preservation

The Carrollton Manor Land Trust and the Maryland Environmental Trust are pleased to announce that Jo Anne Murphy has placed her farm in permanent preservation.

Mr. and Mrs. Murphy were looking for property in the mid 1970's that was "private, rural, quiet, and with a stream." This 27 acres was more than they needed and the commute to work was long, but the land was just what they wanted. She describes the farm as "unique, isolated with a ¼ of a mile driveway over a 1900's B & O aqueduct bridge called the Adamstown Cutoff." The house is built along the Tuscarora Creek, a tributary to the Potomac River.



*Plate presented to Mrs. Murphy
from CMLT*

The Murphy's utilized the land by raising cattle and horses, growing iris, and sharing the land with wildlife. Deer, foxes, wild turkeys (up to 22 at one time), pheasants and "any bird that wants to come" make Glen Cairn Farm (Scottish for Rocky Farm) a wildlife sanctuary. In addition, beavers have built dams and mallards and wood ducks have found the creek their home. With the recent rain and snow, the stream is once again flowing strong and Mrs. Murphy hopes to see fish again. At one time, the Murphy's raised 1,300 varieties of iris and sold them as a home based business. The American Iris Society Convention met at Glen Cairn for several years. The Murphy's closed the iris business after 10 years of dedication and hard work.

Prior to permanently preserving the land, the Murphy's were good stewards and Mrs. Murphy plans to stay on the farm as long as she can. She continues to own her farm but if the farm is sold, the next owner is required to abide by the easement document

(Preservation continued on page 2)

The Carrollton Manor Land Trust is a non-profit, 501(c)3, charitable organization under the federal tax code and is therefore eligible to accept charitable donations.

PHONE: 301-874-1940 FAX: 301-874-1941
www.cmlandtrust.org

Be a part of the Legacy

If you would like to become a member of CMLT, please visit our website at www.cmlandtrust.org and click on "join" or call our office at 301-874-1940. Your membership will support land preservation efforts in southern Frederick County. Help us protect our rural heritage and become part of the solution today.

Thanks to all our November Basket Bingo Sponsors

Your donations were crucial to making this event a successful fundraiser:

Aroma House; Bodmer's Stoves and Pottery; Book Center, a Hallmark Gold Crown Store; Chuck Wade Sod Farm; David and Joy Clem; Computercations; Julie Costello; Phil and Ilene Freedman; Gabe's Service; Giant Food, Kingsbrook Crossing Shopping Ctr; John and Barbara Jorgensen; Mary Kay Beauty Consultant, Susan Beakes; Morris Auctions; Puppets, Puzzles, and Patchwork; Peter & Jodye Roebuck; Sherman Insurance Agent, "Chip" Jewell; Greg and Kara Smith; Target; Upward Enterprises; William G. Willmann

Board Of Directors

President

Nancy Bodmer

Vice President

Jodye Roebuck

Secretary/Treasurer

Joy Clem

Marcel Aillery

Lisa K. Boyer

Rolan C. Clark

Wiley W. Horsley, Jr.

Mehrl Mayne

Andrew Mekelburg

Earl H. Robbins, Jr.

CMLT Breaking Ground

The Trust's 2nd annual meeting was held in September 2002 and featured Laura Olsen, assistant Director for the Coalition for Smarter Growth. Ms. Olsen's presentation focused on the need for a comprehensive approach to regional planning in the greater Washington, D.C. metro area. This approach would concentrate new growth near urban core areas served by public transport, helping to create more livable cities while relieving development pressures on outlying agricultural lands and open space. We thank Ms. Olsen for speaking at the annual meeting. It was a pleasure seeing everyone and we thank all those who attended.



Laura Olsen, Marcel Aillery, Nancy Bodmer at CMLT Annual Meeting

CMLT Board members have been busy on many fronts since our last newsletter. Several months were spent preparing the Carrollton Manor Rural Legacy grant application. Members also attended several important meetings: the Maryland Environmental Trust workshop on the Tools of Obtaining Easement Donations and the Maryland Land Conservation Assembly in Annapolis. During the Family Farm Festival at Hedgeapple Farm, north of Buckeystown, the CMLT set up a display which promoted the many tools for land preservation. The CMLT held a successful fundraiser which brought in much needed funds to help maintain our office. Several members attended meetings sponsored by the Frederick County Civic Association and serve on the Eastalco Citizen's Advisory Board, the Mid-Maryland Land Trust Association, and the Rt. 15 Scenic Byway Advisory Committee.

Most importantly, we thank Mrs. Jo Anne Murphy who placed her farm in permanent protection from development (see feature article). The CMLT co-holds the easement with the Maryland Environmental Trust and will monitor the land for generations.

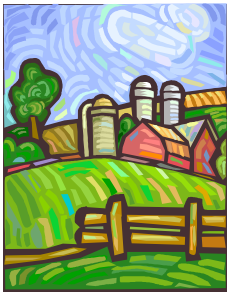
(Preservation continued from page 1)

she signed. Mrs. Murphy's wants "...to keep the farm as a wildlife habitat, rural in nature, agricultural if possible, and to preserve for the wildlife what is there now". In addition to the knowledge that her property can never be developed, Mrs. Murphy will enjoy income and property tax benefits from this donation. We applaud Mrs. Murphy's decision to place her farm in preservation and we thank her for working with the Carrollton Manor Land Trust.

Mrs. Murphy assures that her property will remain as is by signing a conservation easement, extinguishing the development rights of the property. In addition to assisting Mrs. Murphy with the easement process, the CMLT will monitor the property in the future to ensure the easement agreement is followed, even when the property is sold. One of the CMLT's missions is to inform and guide landowners in the many ways to preserve their property. If you need more information or have questions, please call our office and talk with Joy Clem at 301-874-1940.

Carrollton Manor Rural Legacy Initiative

On January 21, 2003, the Carrollton Manor Land Trust submitted a Rural Legacy application for consideration by the Maryland Department of Natural Resources. This application proposes a second Rural Legacy Area in Frederick County that would be co-sponsored by the Board of County Commissioners ("BOCC"). The current Rural Legacy area, co-sponsored by the Mid-Maryland Land Trust Association ("MMLTA") and the BOCC, is located in western Frederick County. Since 1999, MMLTA has received \$9.35 million dollars of State funds with an additional \$1.9 million in County matching funds to protect 3,500 acres from Myersville to Brunswick.



The goals of the Rural Legacy Program are to protect large contiguous areas rich in agriculture, forestry and natural and cultural resources through funding and partnership support from the Department of Natural Resources, the local government and local land trusts. Protection is provided through creation of a conservation easement by the purchase of development rights from willing landowners or from the fee simple purchase of land.

The CMLT received support from the Frederick County Planning Commission and the BOCC which found the grant application consistent with the Countywide Comprehensive Plan. Matching funds were pledged by the Board of County Commissioners which further supported the Carrollton Manor Rural Legacy Initiative.

The CMLT is pleased by the level of interest in this preservation initiative for the Adamstown Region. A total of 37 properties with 4,337 acres were included in this grant application, suggesting that many landowners in the area share a strong commitment to preservation of the land. The CMLT wishes to thank the landowners for their interest in the program.

State-wide applications will be reviewed by the Rural Legacy Advisory Board and a recommendation for grant funding should be submitted to the State in late spring. The Board of Public Works of the State of Maryland should make the final decision by late summer on which applications are to receive Rural Legacy grant funding and designations. We will keep you informed.

CMLT Board wishes to thank those individuals and businesses who have supported us with major gifts.

Financial Support:

- ❖ J. E. Murphy
- ❖ Potomac Conservancy
- ❖ MacRo, Ltd.



In addition to financial support, Macro LTD presented Nancy Bodmer with donated hats & mugs.

CMLT Welcomes its Newest Members

Essroc Cement Corp.
Betty Rae Romaine
Lois Noffsinger-Spurrier
M. Julia Ditman
Bonnie Bailey-Baker
Elizabeth Peppe
Keith Galloway

Support CMLT and give a beautiful gift at the same time!



*The Adamstown Region
Frederick, Maryland*

"A Collage of the Adamstown Region"

Note cards and prints are available of this original artwork by local artist Michelle L. Winkleman depicting historic buildings in the Adamstown Region.

→ Note cards are 4 1/4" x 5 1/2" and come 5 to a pack, including envelopes: \$10.00

→ Prints are 11"x17" ready for matting and framing: \$25.00

Cost: Stated above plus 5% sales tax. All proceeds benefit the Land Trust.

To purchase any of these beautiful items, please contact the CMLT or visit Bodmer's Stoves and Pottery in Buckeystown (301-662-0777)

You Can Make a Difference

As land gives way to development, a part of the agricultural and rural character we cherish is lost forever. With increasing development pressures, it is all the more important that our agricultural industries and rural heritage not be forgotten.

If you value the rural character of the surrounding lands and want to help protect them, here are a few ideas: Support our local farmers. Buy locally grown produce and food items (check future updates to our website for local farming businesses). Give farmers and their equipment room on the roads. Recognize that farming practices may generate odors and "rural" smells are part of the landscape. Buy from local agriculture support businesses such as grain/feed stores and farm equipment businesses. Respect the integrity of our rural area by keeping country roads clean and protecting fresh water supplies. Get to know your County officials and voice your concern for farmland loss and your support of preservation efforts. These are just a few things we all can do to help protect the agricultural heritage of the region.



Support farmers by purchasing locally grown produce

Budget cuts on Federal, State and local levels may have moved preservation to the back burner for some, but preservation must not be overlooked during these tight

budgetary times. Our legislators and governing bodies must hear from YOU to maintain the momentum and keep up the fight for program funding. Please contact your legislators to let them know that farmland preservation is still important (local and state legislators are listed under www.state.md.us).

The Carrollton Manor Land Trust continues to work to offer support, guidance, and direction to those interested in preserving our agricultural heritage and rural landscapes in southern Frederick County. Your support through CMLT membership helps to demonstrate the public's commitment to farmland stewardship and preservation.

.....

Potomac Watershed Partnership

The CMLT would like to thank the Potomac Watershed Partnership ("PWP") for its donation of the printing costs for this newsletter. The PWP is one of fifteen Forest Service-sponsored large-scale watershed restoration efforts working to expand collaborative relationships among local, state and federal natural resource agencies, private conservation groups, and communities. The PWP aims to accelerate watershed and forest stewardship efforts in the Potomac River Basin. To learn more about the Potomac Watershed Partnership, visit www.potomacwatershed.net.

